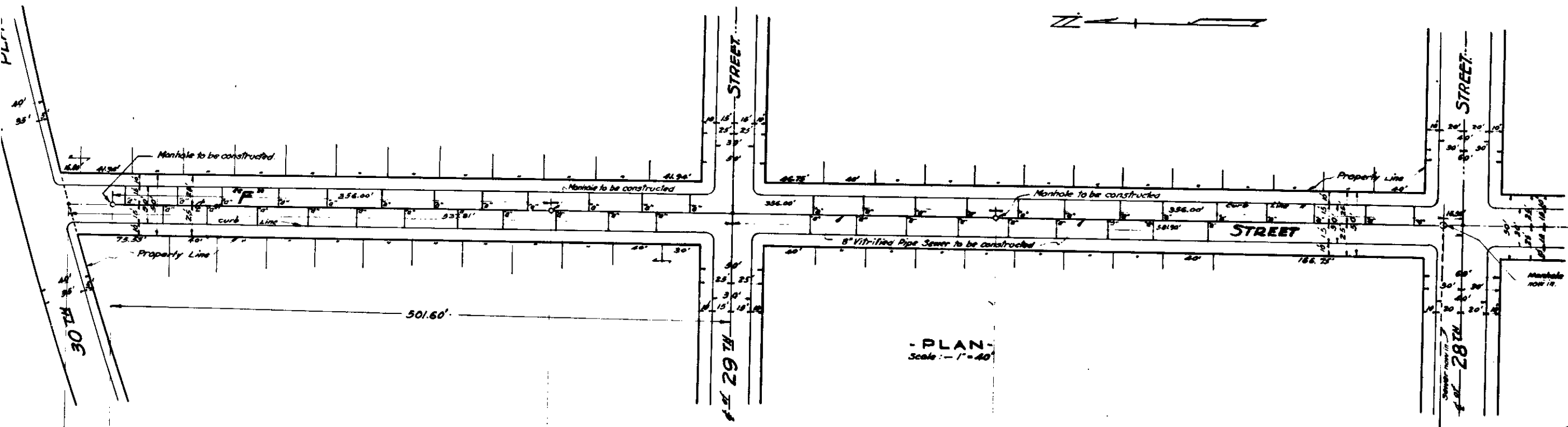


SHEET 1151
 PLAN 113 1866
 FOR

'F' STREET SEWER
 - BETWEEN -
28TH STREET AND 30TH PL
 IN THE
 CITY OF SAN BERNARDINO
 CALIFORNIA

SEPTEMBER 1949 R.D. FORSYTH
 Acting City Engineer

PLAN ADOPTED October 3, 1949



NOTE: All Vitrified Pipe connecting sewers shall be constructed on an upward grade of two per cent from the main sewer, and shall extend from the main sewer to the curb line.

LEGEND

- * or in means inch or inches
- ft. means Foot or feet
- N# means number
- C# means Center Line
- E# means Elevation
- 8" Vitrified Pipe Sewer to be constructed shown thus: ————
- 6" x 4" Vitrified Pipe Sewer to be constructed shown thus: ————
- Manholes to be constructed shown thus: (circle with 'M')
- Sewer now in shown thus: (dashed line)
- Manhole now in shown thus: (circle with 'M')
- St. means Street
- Av. means Avenue

SEWER DETAIL

- Lineal ft. of 8" Vitrified Pipe Sewer to be constructed: 1768
- Lineal ft. of 6" Vitrified Pipe Sewer to be constructed: 673
- No. of Manholes to be constructed: 45
- No. of 6" x 4" Vitrified Pipe Sewer to be constructed: 45

TITLE TO STREET

'F' STREET was dedicated by map of Tract No. 1733, Thompson Bros. Poultry Colony, recorded in Book 26 of Maps, of Pages 28, 29, 11 and 12, records of San Bernardino County, California.

GRADE RESOLUTION

Grade of 'F' Street was established by Resolution 11706 of the City of San Bernardino, California, adopted September 1948.

DATUM

All Elevations shown in Red Ink are in feet and are above a plane which is 1045.25 feet below the City Bench Mark as established by Ordinance 388 of the City of San Bernardino, California.

